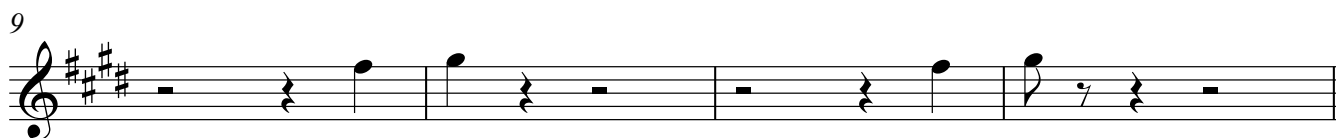


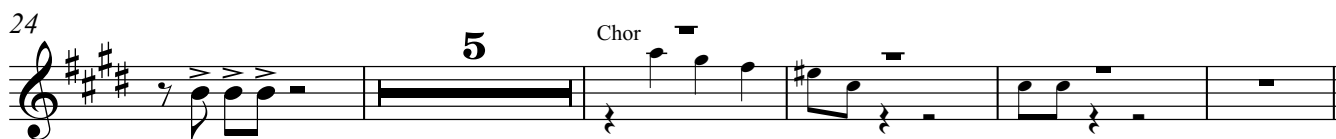
# Zigeunerchor

Giuseppe Verdi  
Vereinfachte Stimmen Jarkko Riihimäki

Allegro ♩=138



Ve - di! le fo - sche not - tur - ne\_\_ spo - glie\_\_ de' cie - li sve - ste l'im - men - sa



Al - l'o - pra al - l'o - pra! Dà - gli.



(DSO SymphMob 2018 Zigeunerchor)

2

Alt Saxofon in Eb

47

ff f

Musical staff 47-51 in treble clef, key signature of three sharps (F#, C#, G#). It begins with a rest, followed by a quarter note with an accent and a fermata, then a quarter rest, and continues with eighth and quarter notes. Dynamics *ff* and *f* are indicated.

52

Musical staff 52-55 in treble clef, key signature of three sharps. It continues with eighth and quarter notes, ending with a quarter rest.

56

Musical staff 56-60 in treble clef, key signature of three sharps. It features a series of quarter notes with rests, ending with a quarter note and a quarter rest.

61

4 9 Chor 2

Musical staff 61-65 in treble clef, key signature of three sharps. It contains a 4-measure rest, a 9-measure rest labeled "Chor", and a 2-measure rest. The lyrics "Al - l'o - pra al - l'o- pra..." are written below the staff.

Al - l'o - pra al - l'o- pra...

74

5

ff

Musical staff 74-79 in treble clef, key signature of three sharps. It begins with a 5-measure rest, followed by eighth and quarter notes with accents and fermatas. Dynamics *ff* is indicated.

80

Musical staff 80-83 in treble clef, key signature of three sharps. It continues with eighth and quarter notes, ending with a quarter rest.

84

2

ff

Musical staff 84-87 in treble clef, key signature of three sharps. It features a 2-measure rest, followed by a quarter note with an accent and a fermata, and a quarter rest. Dynamics *ff* is indicated.