

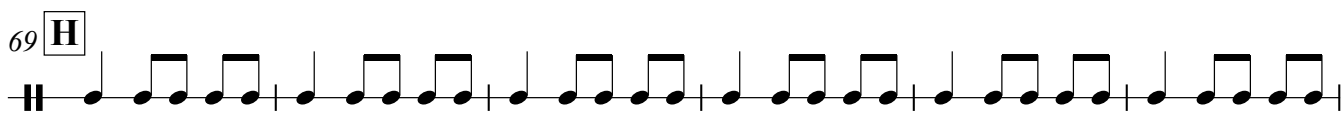
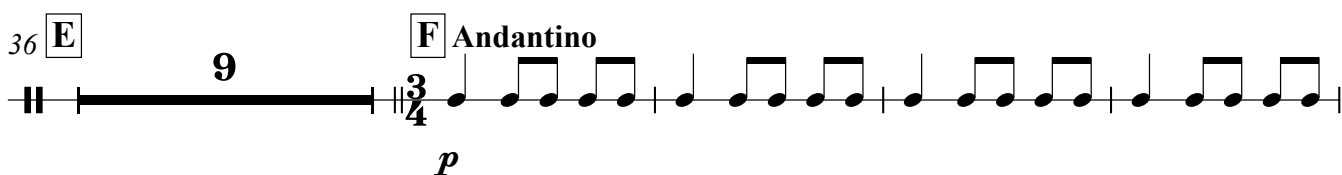
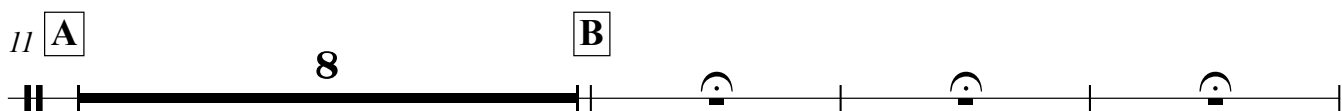
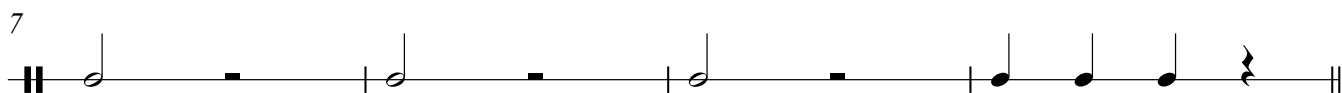
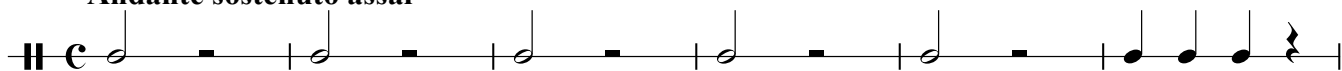
Percussion

# L'Arlésienne Suite Nr. 2

## I. Pastorale

Georges Bizet, bearbeitet von Fritz Hoffmann  
vereinfachte Stimmen Jarkko Riihimäki

**Andante sostenuto assai**



Pastorale  
Percussion

2

75

81

86 **I**

91

96 **K**

100

105 **L**

113 **M**

118 **N**