

Klarinette II inst. "Chor der Juden"
aus der Oper "Nabucco" v. G. Verdi.

Largo.

Musical score for Clarinet II, measures 1-33. The score is written in treble clef with a key signature of two sharps (F# and C#) and a common time signature (C). The tempo is marked "Largo".

Measures 1-4: Measure 1 starts with a whole rest. Measures 2-4 contain triplet eighth notes. Measure 2 has a *p* dynamic marking. Measure 4 has a *p* dynamic marking.

Measures 5-8: Measure 5 starts with a whole rest. Measures 6-8 contain quarter notes with a *f* dynamic marking in measure 6 and a *ff* dynamic marking in measure 8.

Measures 9-10: Measure 9 contains sixteenth notes with a *p* dynamic marking. Measure 10 contains sixteenth notes.

Measures 11-15: Measure 11 starts with a whole rest. Measure 12 contains a circled note. Measure 13 contains a circled measure number "27" in a box. Measures 14-15 contain eighth notes with a *p* dynamic marking.

Measures 16-17: Measure 16 contains eighth notes with accents (>). Measure 17 contains eighth notes with accents (>).

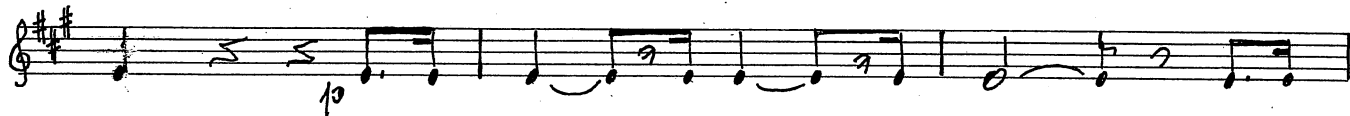
Measures 18-23: Measures 18-23 contain triplet eighth notes. Measure 18 has a *p* dynamic marking. Measure 23 has a *p* dynamic marking.

Measures 24-27: Measures 24-27 contain triplet eighth notes. Measure 27 has a *ff* dynamic marking.

Measures 28-30: Measure 28 contains a circled measure number "28" in a box. Measures 29-30 contain eighth notes with a *ff* dynamic marking.

Measures 31-33: Measure 31 contains eighth notes with a *p* dynamic marking. Measure 32 contains eighth notes with a *p* dynamic marking. Measure 33 contains eighth notes with a *p* dynamic marking.

36

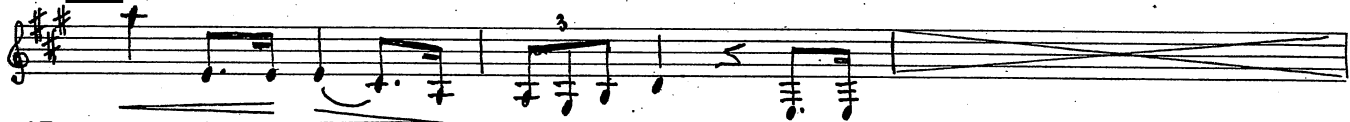


39

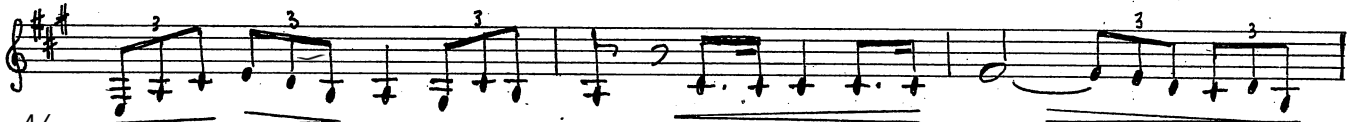


41

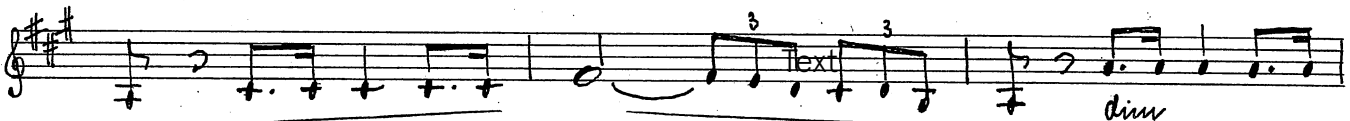
29



43



46



49

