

Tuba.

"Chor der Juden"

aus der Oper "Nabucco" v. G. Verdi.

Largo.

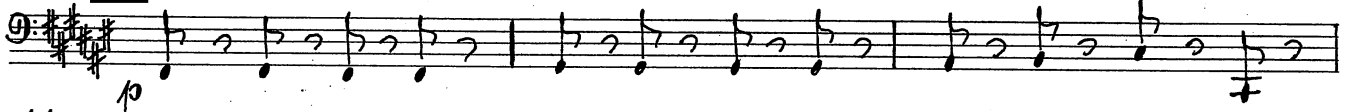
Handwritten musical score for Tuba, measures 9-35. The score is in 2/4 time and G major. It features various dynamics and markings:

- Measure 9: ff , 3
- Measure 10: pp , 27 (boxed)
- Measure 13: pp
- Measure 16: $\#$
- Measure 19: $\#$
- Measure 22: $\#$
- Measure 25: $\#$
- Measure 28: ff , 28 (boxed)
- Measure 31: ff , 2
- Measure 35: 6

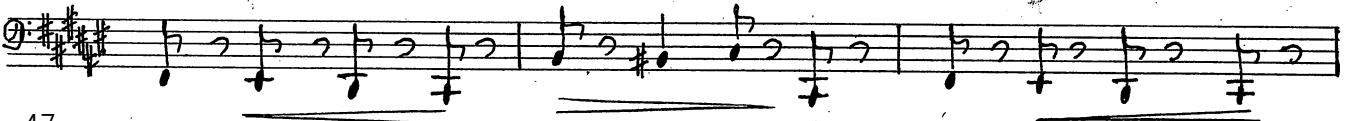
The score concludes with the instruction "Hier wenden!" in measure 35.

41

29



44



47

